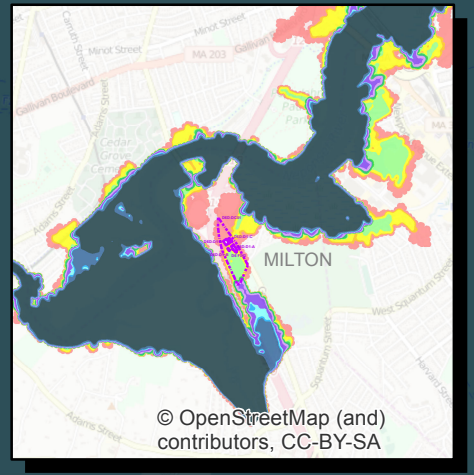
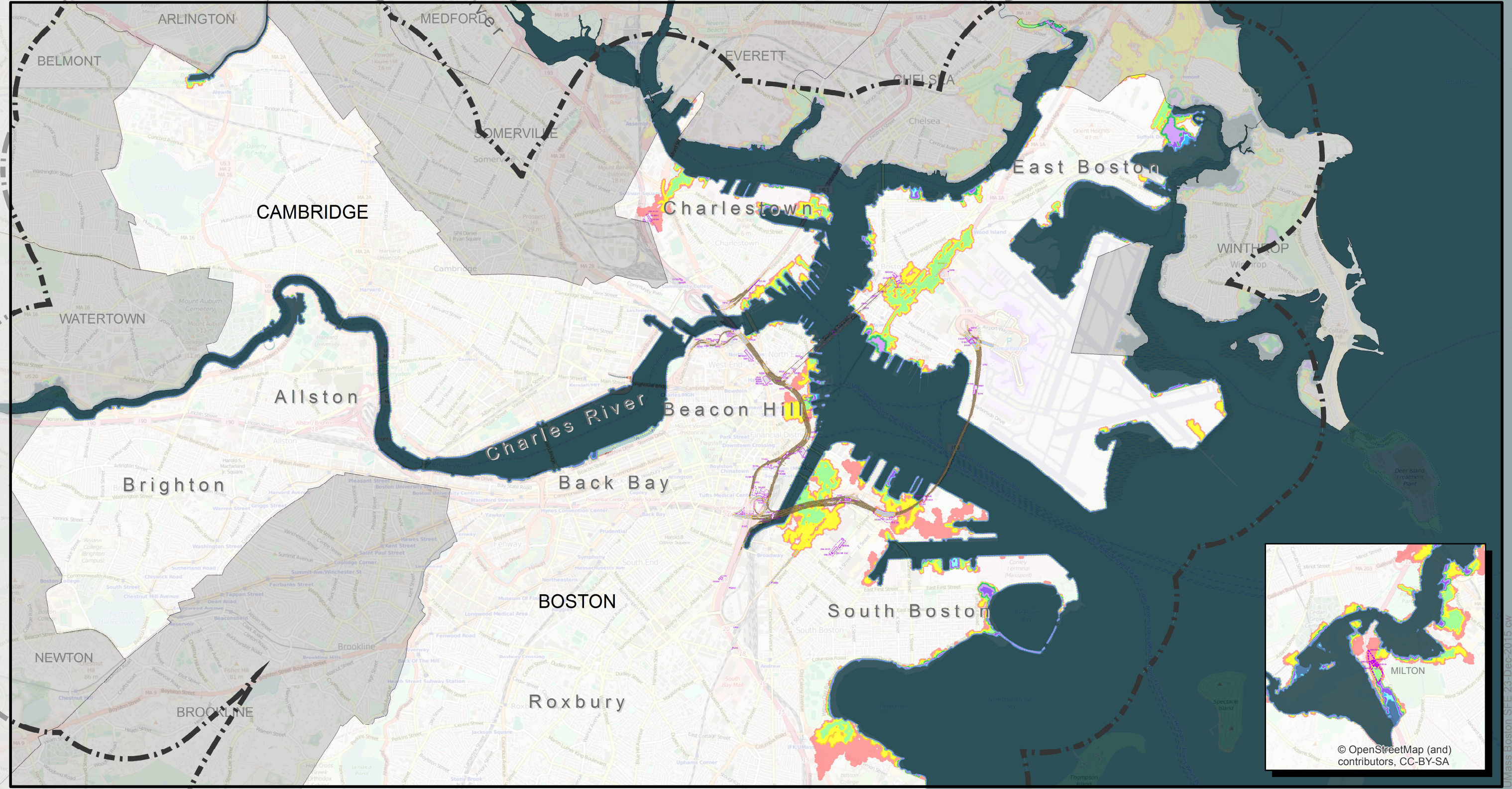
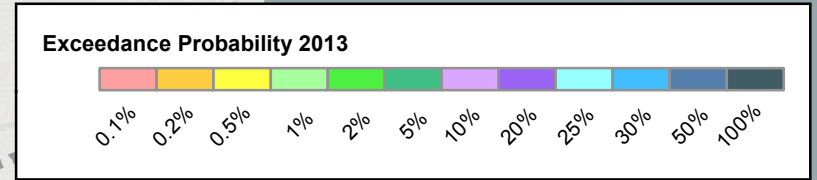


**Legend**

- BH-FRM Extent
- Complex
- Structure
- Boat Section
- Tunnel

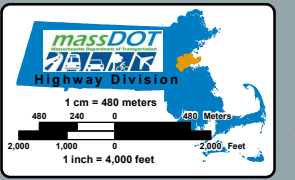


MassDOT/FHWA  
Climate Adaptation Pilot

23-Dec-2015

Sources: MassDOT, Woods Hole Group, UMass Boston, MassGIS, and ESRI (as indicated below)

**BH-FRM Coastal Flood Exceedance Probabilities**  
Central Artery and Tunnel System  
2013 Scenario



UMass Boston SFE-23-Dec-2015.cw