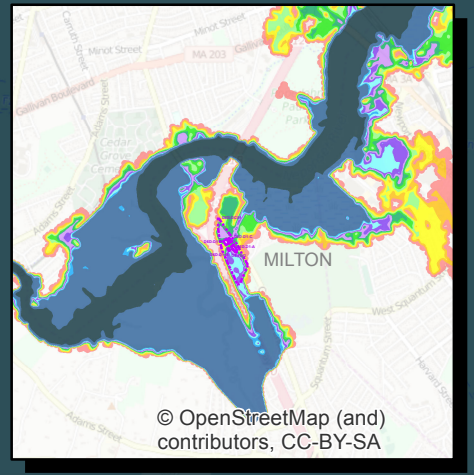
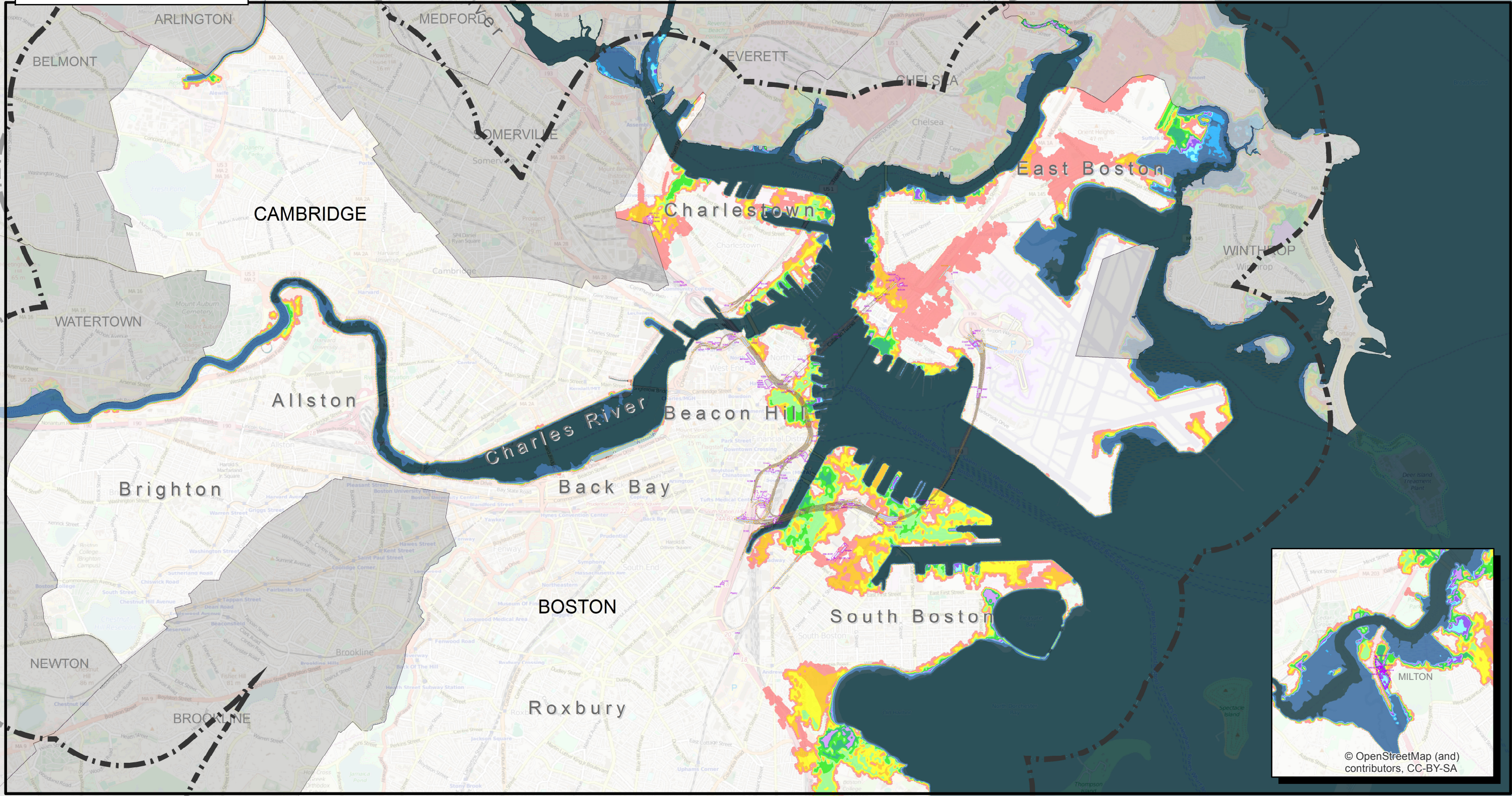
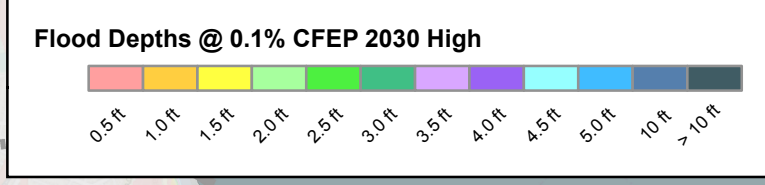


CA/T System Features
(Feature codes available separately)

- Complex
- Structure
- Boat Section
- Tunnel
- BH-FRM Extent



MassDOT/FHWA
Climate Adaptation Pilot

29-Mar-2016

Sources: MassDOT, Woods Hole Group, UMass Boston, MassGIS, and ESRI (as indicated below)

BH-FRM Coastal Flood Depths 0.1% CFEP
Central Artery and Tunnel System
2030 High Scenario
0.62 feet (19 cm) SLR relative to 2013

