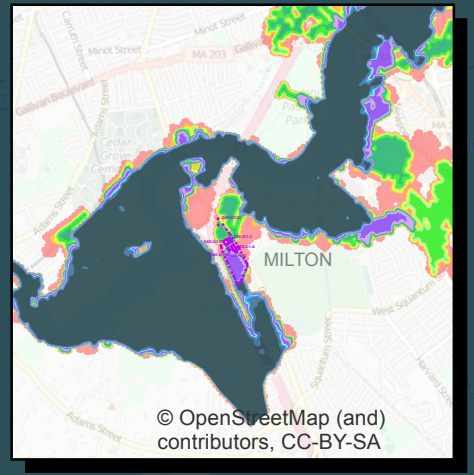
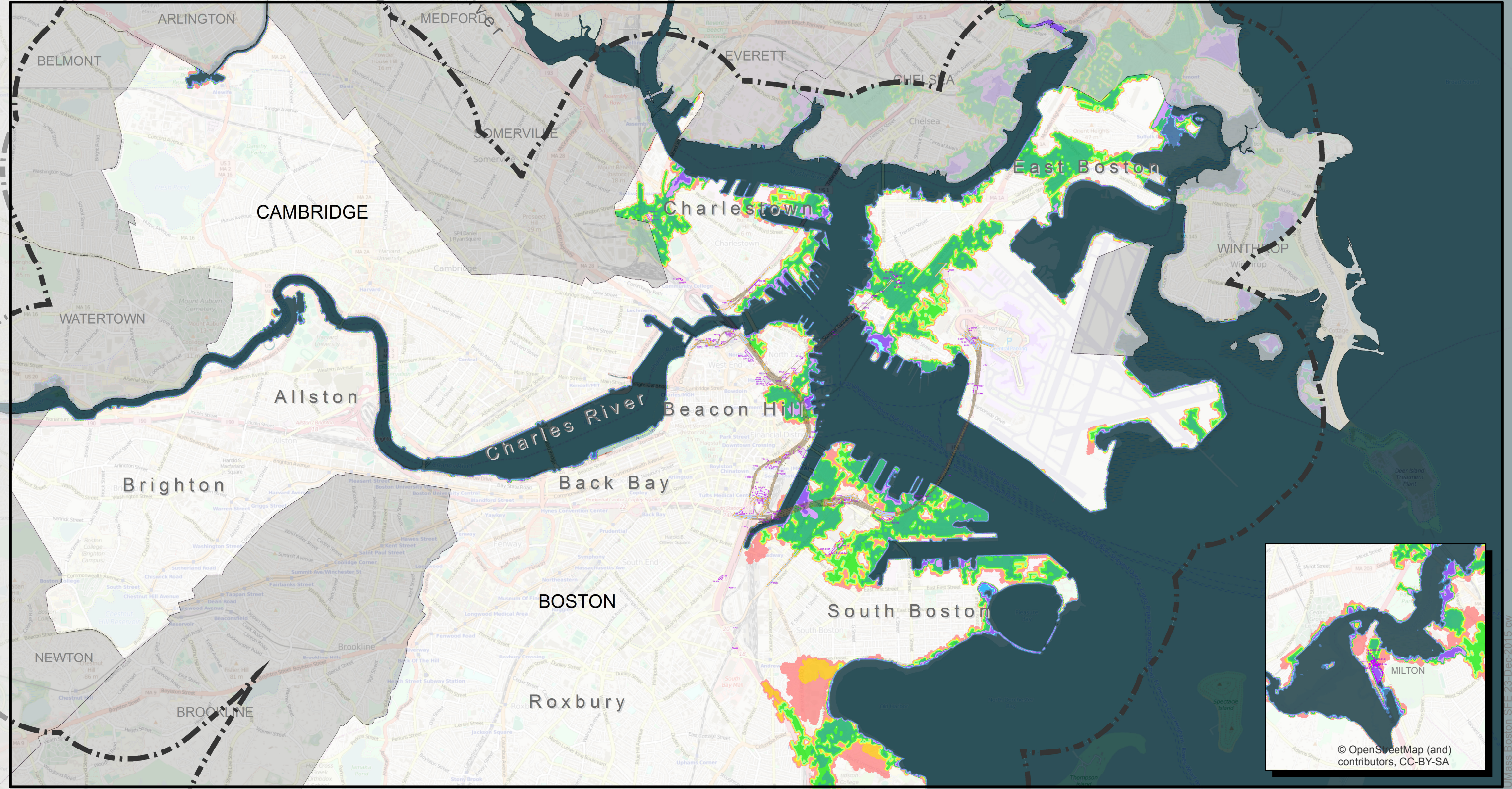
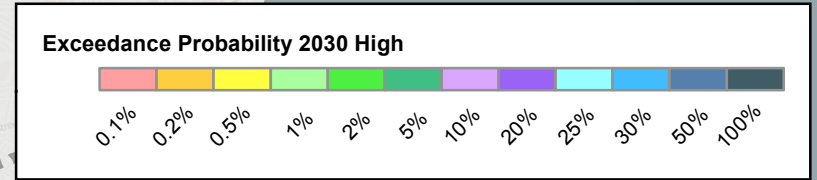


Legend

- BH-FRM Extent
- Complex
- Structure
- Boat Section
- Tunnel



MassDOT/FHWA
Climate Adaptation Pilot

23-Dec-2015

Sources: MassDOT, Woods Hole Group, UMass Boston, MassGIS, and ESRI (as indicated below)

BH-FRM Coastal Flood Exceedance Probabilities
Central Artery and Tunnel System
2030 High Scenario
0.62 feet (19 cm) SLR relative to 2013

