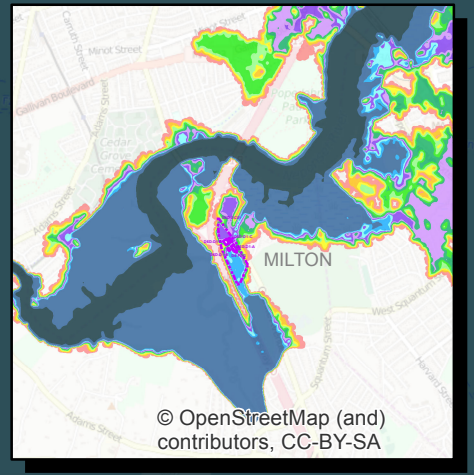
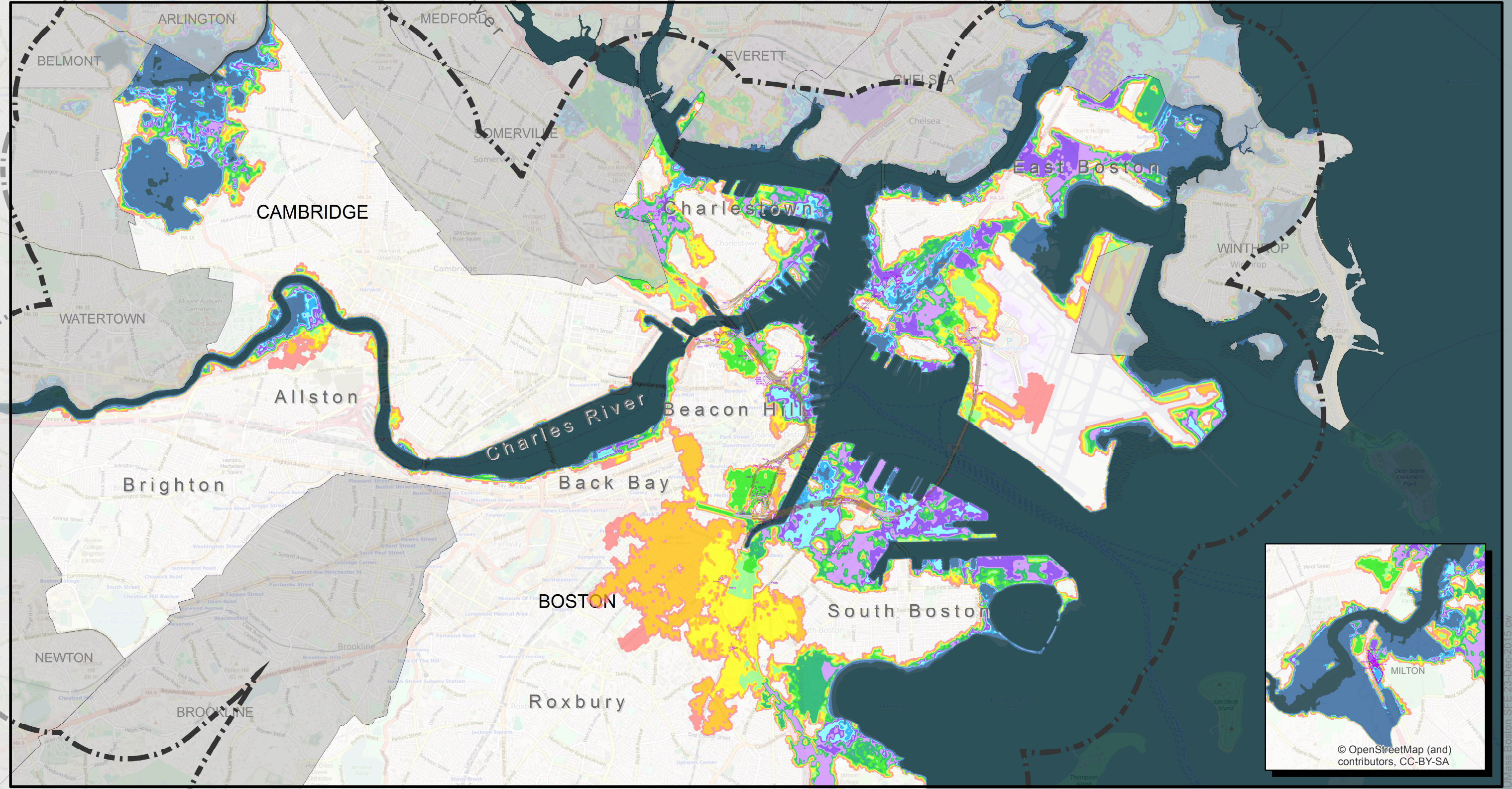
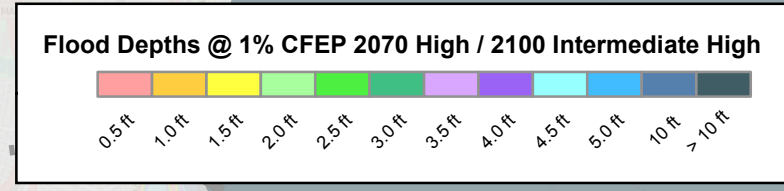


**Legend**

- BH-FRM Extent
- Complex
- Structure
- Boat Section
- Tunnel

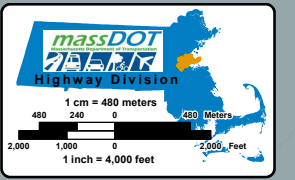


MassDOT/FHWA  
Climate Adaptation Pilot

23-Dec-2015

Sources: MassDOT, Woods Hole Group, UMass Boston, MassGIS, and ESRI (as indicated below)

BH-FRM Coastal Flood Depths 1% CFEP  
Central Artery and Tunnel System  
2070 High / 2100 Intermediate High Scenarios  
3.2 feet (98 cm) SLR relative to 2013



UMass Boston SFE 23-Dec-2015 cw