

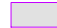

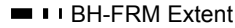
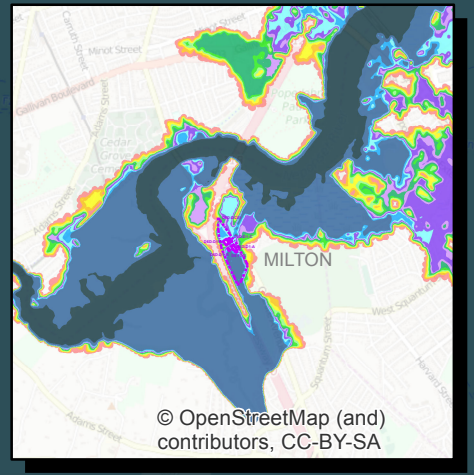
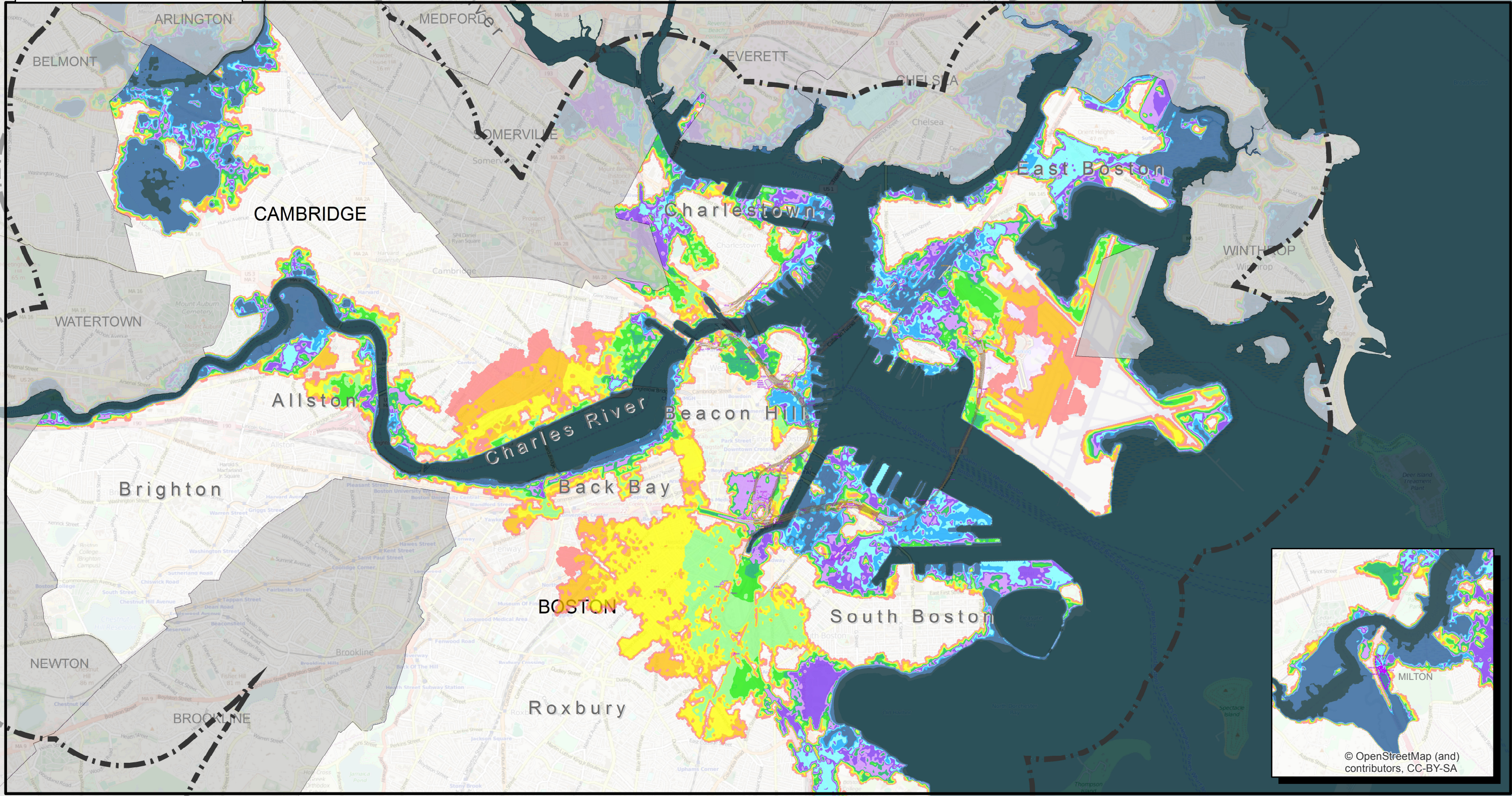
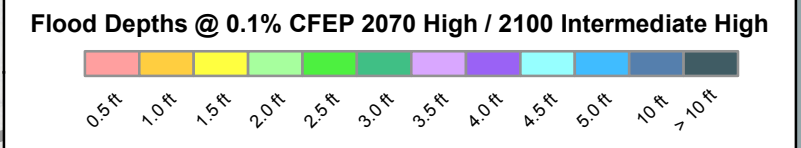


CA/T System Features
(Feature codes available separately)

 Complex	 Boat Section
 Structure	 Tunnel
 BH-FRM Extent	



			
---	---	---	---

MassDOT/FHWA
Climate Adaptation Pilot

29-Mar-2016

Sources: MassDOT, Woods Hole Group, UMass Boston, MassGIS, and ESRI (as indicated below)

BH-FRM Coastal Flood Depths 0.1% CFEP
Central Artery and Tunnel System
2070 High / 2100 Intermediate High Scenarios
3.2 feet (98 cm) SLR relative to 2013

