

# BOSTON HARBOR NOW



REPORT TO THE COMMUNITY  
2018 & 2019



# GOVERNANCE

## TRUSTEES

---

### 2019

Jeff Porter, Chair  
Barbara Capuano  
Carol Churchill  
Brian Dacey  
Jamie M. Fay  
Robert Golledge  
Elizabeth Grob  
Robin Glasco  
John Hamel  
Meaghan Hooper-Berdik  
Ann R. Klee  
Bryan J. Koop  
Liz Morningstar  
Martin O'Neill  
Shelly O'Neill  
Bud Ris  
Paige Scott-Reed  
Cathy Douglas Stone  
Yanni Tsipis  
Richard Walker

### 2018

Jeffrey R. Porter, Chair  
Barbara Capuano  
Carol Churchill  
Brian Dacey  
Jamie M. Fay  
Robert Golledge  
Elizabeth Grob  
John Hamel  
Meaghan Hooper-Berdik  
Ann R. Klee  
Liz Morningstar  
J. Keith Motley  
Martin O'Neill  
Shelly O'Neill  
Bud Ris  
Paige Scott-Reed

Cathy Douglas Stone  
Yanni Tsipis  
Richard Walker

### EX OFFICIO

Katherine F. Abbott  
Sec. Matthew Beaton  
Austin Blackmon  
Michael Creasey  
Fred Laskey  
Alison Nolan  
Lisa Wieland

### LIFETIME

Governor Michael Dukakis  
Governor William Weld

### FOUNDING EMERITUS TRUSTEES

Richard Dimino  
Douglas McGarrah  
Thomas McShane

### BOARD OF ADVISORS

---

#### 2018-2019

Alison Nolan, Chair  
Sydney Asbury  
Maeve Bartlett  
Julie Burns  
Alisha Collins  
Ryan Cox  
Bill Davis  
Sarah Finnie Robinson  
James Folk  
Dean Hara  
Marc Knowlton  
Rebecca Lee

Mary Kay Leonard  
Josiane Martinez  
Martha Ann Mazzone  
George McEvoy  
Jennifer McMahan  
Charlayne Murrell-Smith  
Fred Peterson  
Tom Powers  
Venkat Srinivasan  
Betsy Wall  
Leverett Wing  
Kathy Winn

“Boston Harbor Now is hard at work implementing our ambitious vision for a welcoming and resilient Boston Harbor and Islands for all. I am proud of the tireless efforts of our best in class professionals and volunteer leaders. Of course none of what we’re doing is possible without financial support and, for that, we are most grateful for our supporters like you. Thank you!”



**Jeff Porter**  
Chair, Board of Trustees

*“Today the Harbor is critical to the health and well-being of our citizens and economy. Together, we can lead the nation in building a 21st-century waterfront – a waterfront that provides unprecedented opportunities for public use and is well-adapted to climate change.”*



**Kathy Abbott**  
**President and CEO**



# IMPROVING WATER TRANSPORTATION

---

Over the course of two years, Boston Harbor Now managed a two-part project—the Comprehensive Boston Harbor Water Transportation Study and Business Plans, and the Water Transportation Strategy for the Boston Harbor Islands National and State Park—to study expanded water transportation in Greater Boston. The study culminated with the release of two viable business plans for new ferry service in Boston’s Inner Harbor and from Boston to Quincy.

To create the plans, Boston Harbor Now partnered with the Massachusetts Department of Transportation (MassDOT), Massport, and other stakeholders to help bring Boston Harbor’s commuter and recreational water transportation system to scale and link it to land-based transit options. When implemented, the proposed ferry service will help ease Greater Boston’s traffic problems, spur transit-related development, and increase recreational access to the Boston Harbor Islands National and State Park.



## The Comprehensive Water Transportation Study Process Included:

- ▶ 3 stakeholder workshops with 100 participants
- ▶ 3,689 responses to a survey shared across the region
- ▶ 30 dock sites studied across the region
- ▶ 150 participants in an open house event

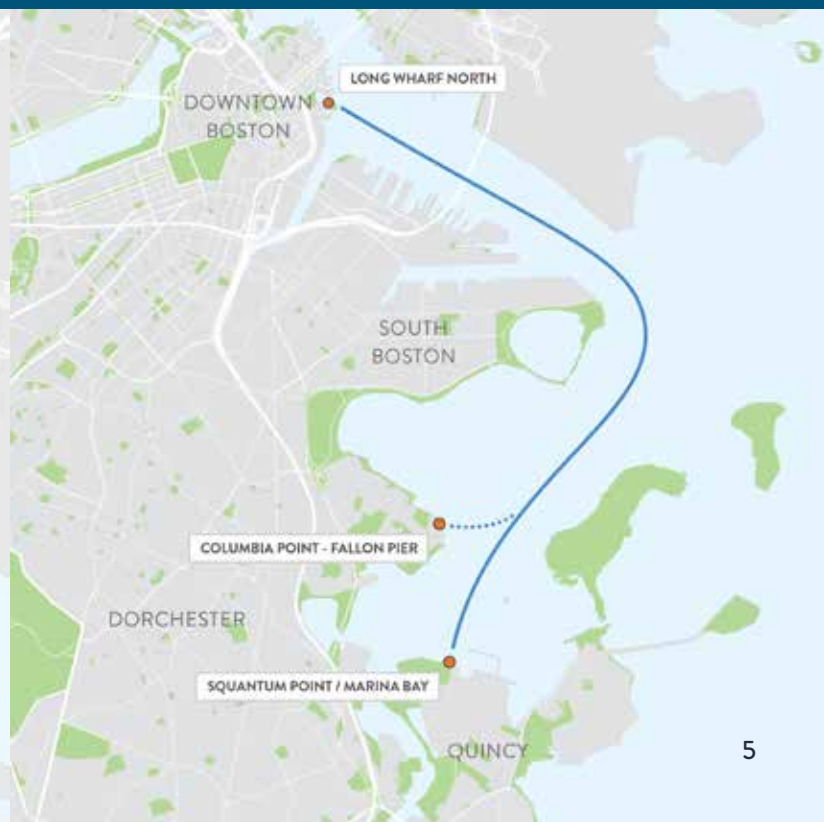


## Proposed Routes for New Water Transportation Service

### ROUTE 1: INNER HARBOR CONNECTOR



### ROUTE 2: QUINCY / COLUMBIA POINT





# A WORKING PORT FOR THE 21<sup>st</sup> CENTURY

Boston Harbor Now released two reports in 2018 and 2019. *Boston's Working Port: Planning a 21st-Century Harbor* sets the stage for informed discussion of the future of Boston's Working Port and its contributions to our economy and way of life. The second installment, *Innovation in Boston's Working Port*, responds to the four themes that emerged from our discussions with stakeholders, industry experts, advocates, and city and state officials: Growth, Flexibility, Synergy, and Change for our Working Port.

In the 2018 and 2019 fiscal years, Boston Harbor Now:

- ▶ Provided 41 official comment letters on waterfront development to encourage climate resilience and equitable public access for the Harborwalk.
- ▶ Hosted 15 Harbor Use Public Forums to engage the public on waterfront issues, including Designated Port Areas and Climate Ready Boston.



**GROWTH** • Areas within Boston’s Inner Harbor that are underused or vacant offer multiple opportunities for growth and improvement.

**FLEXIBILITY** • Boston Harbor stakeholders, community groups, and members of the public understand that Designated Port Areas (DPAs) serve a specific purpose. In the context of today’s Boston Harbor, many feel strongly that DPAs are too traditional and should be modernized.

**SYNERGY** • A common thread among all successful port cities is a sense of pride and ownership of their working waterfront. Sustained community support requires a more intentional effort.

**CHANGE** • Some ports of the future will no longer need to be walled off from the community. If we focus on improving the port-city connection, portions of our working waterfront can become part of the next generation’s urban experience.



Designated Port Areas (DPAs) are defined by the Massachusetts Office of Coastal Zone Management as “land and water areas with certain physical and operational features that have been reserved by the Commonwealth for maritime-industrial uses.” Boston Harbor contains four of the state’s ten DPAs.





# BOSTON HARBOR FOR ALL SUMMIT

---

In May 2018, Boston Harbor Now held its first biennial Boston Harbor for All summit, focused on realizing opportunities for great public spaces, equitable and innovative development, a strong working port, and long-term climate resilience. The event featured a Mayor's Perspective panel with Mayor Kim Driscoll of Salem, Mayor Thomas McGee of Lynn, and Mayor Martin J. Walsh of Boston, along with a keynote address by Mitchell Silver, Commissioner of the New York City Parks Department. Over 600 people in total engaged in workshops, waterfront tours, and panel discussions.







# RISING TIDES & THE EFFECTS OF CLIMATE CHANGE

In the winter of 2018, three nor'easters struck the region, coinciding with some of the highest tides of the year. The combination was devastating for our waterfront. Boston Harbor Now documented the events and continues to advocate and inform the public about the effects of climate change and the need for greater resilience along our shorelines.

At the Boston Harbor for All Summit in May 2018, the University of Massachusetts Boston Sustainable Solutions Lab announced the findings of its Feasibility of Harbor-wide Barrier Systems study. Researchers found more immediate benefits for shore-based climate adaptation solutions. Later that year, the City of Boston released its Resilient Boston Harbor vision. Boston Harbor Now works with leaders from all levels of government along with the private and nonprofit sectors to design a waterfront that is more accessible, resilient, and inclusive than ever before.

►  
“We don’t have to look far for early warning signs. A dumpster floating down the street at Fort Point in January. Blue Line tracks underwater in March. Floodwaters in Christopher Columbus Park, reaching the Rose Kennedy Greenway for the first time. King tides that routinely flood the Harborwalk. Driftwood on a soccer field at LoPresti Park in East Boston. The hottest and most humid summer in our recorded history—this year. Climate change is very real to Bostonians.”  
-Boston Mayor Martin J. Walsh, Greater Boston Chamber of Commerce event, 2018





# 2018 -2019

## HIGHLIGHTS & ACCOMPLISHMENTS



**OPENED** The [Re]creation artist residency program in partnership with the National Park Service and the Department of Conservation and Recreation (DCR) at Peddocks Island, which included five sculptures from local artists made exclusively from invasive plants on the island. The program commenced with a successful opening reception and cruise, and included opportunities for visitors to engage in arts programming in the park.

**LAUNCHED** The HarborFit program, a season-long calendar of outdoor fitness opportunities kicked off with the annual Spectacle Island 5K. Participants enjoyed yoga, Zumba, kayaking, and fitness walks on the Boston Harbor Islands as well as at landside waterfront parks.

**COLLABORATED** with DCR and the skilled apprentices of TJ McCartney and the Painters and Allied Trades DC #35 to carry out job training projects at Georges and Spectacle Islands. Combined materials and services were valued at \$27,000 for critical facility improvements.







**PARTNERED** with the National Park Service, DCR, Boston area YMCA's and Boys and Girls Clubs to bring 100 youth each week to the Boston Harbor Islands as part of Harbor Discovery Camps.



**RANG IN** the New Year with our annual Ice Sculpture Stroll featuring business and non-profit partners along the waterfront. In 2018, a record number of 14 hosting sites and 16 sculptures lined the waterfront from Seaport Place to the North End, with many sites offering free activities, refreshments and warming stations.

**EXPANDED** off-season programs with the introduction of the Winter Wander, a new program on Peddocks Island taking place each February. At the first event, Boston Harbor Now and our park partners welcomed nearly 300 visitors to the sold-out event. Participants enjoyed history tours, nature walks, and winter survival tips with outdoor instructors from L.L.Bean. Visitors also crowded around the island's new fire pit to enjoy s'mores over a warm fire.

**ATTRACTED** hundreds of thousands of viewers to the waterfront with fireworks displays before Labor Day Weekend and on New Year's Eve. The Fireworks Fund Committee was created in partnership with Friends of Christopher Columbus Park and the Wharf District Council.



**RELEASED** the Harborwalk web tool in partnership with state and city officials in 2018. The user-friendly map and database created a one-stop-shop for visitors to easily navigate the waterfront and understand the thousands of public amenities offered along the Harborwalk. Try it out at [bostonharborwalk.org](http://bostonharborwalk.org).



**WELCOMED** over 90,000 ferry riders to the Boston Harbor Islands National and State Park each season in the summers of 2017 and 2018. Visitors also enjoyed expanded ferry service to Peddocks Island and 15 additional moorings available to recreational boaters.

**AUTHORED** 41 comment letters in the 2018 and 2019 fiscal years, which helped ensure robust public access around new waterfront developments – including 91,465 square feet of publicly accessible outdoor space that is slated to be added in Boston's Seaport.

**ENGAGED** over 6,512 volunteers who provided over 67,000 hours of service in the 2018 and 2019 fiscal years. Projects included invasive species removal, shoreline cleanups, and visitor engagement along the waterfront and within Boston Harbor Islands National and State Park. These contributions were valued at \$1.9 million in volunteer time.



# PROGRAMMING AND ENGAGEMENT

## The Most Free Access on the Harbor: 35,000 Youth and Families in Summer 2018

With the support of our donors, Boston Harbor Now is able to provide free access to the Harbor and to Boston Harbor Islands National and State Park for thousands of individuals each year. In 2018, over 35,000 youth and families took part in free access programming, up from 21,595 in 2017. We are grateful for these partnerships and continue to expand free access and quality programming to make the Harbor more welcoming and accessible for all.

In partnership with the National Park Service (NPS) and the Department of Conservation and Recreation (DCR), Boston Harbor Now helped sponsor over 400 free and low-cost public events in 2018 for park visitors on the Boston Harbor Islands and around the waterfront. Nearly half of all visitors took part in a public program during their visit.

- ▼ “Boston Harbor and the Islands are tremendous public health and economic assets for our region. These unique public resources present Boston and the surrounding communities with sources of entertainment, education, fitness, and culture. This year we worked hard to plan more free access opportunities than ever before so that as many people as possible could experience the Harbor and Islands and take advantage of all they have to offer.”  
-Kathy Abbott, President and CEO of Boston Harbor Now





“I think it’s great because – if you look around – there are a lot of families here, and it gives them an opportunity that they might not otherwise have. So I think that type of community event is really beneficial for the whole city and for everybody involved.”

- Kathy, Quincy Cruise

**Island Pass** • Through our network of 250+ nonprofits and community groups, Island Pass provides free access to the Boston Harbor Islands National and State Park.

**Community Cruises** • Boston Harbor Now hosted 9 Community Cruises in 2018, welcoming people to the harbor with music, art, food, dance, and kids’ activities in partnership with the National Park Service and other agencies and non-profits.

**Free Ferry Days** • More than 8,000 people visit the Boston Harbor Islands National and State Park through Free Ferry Days each year, including on Free Fun Friday in partnership with Highland Street Foundation and an annual Veterans Cruise.

**Library Pass Program** • Serving communities inside of Route 128, library members can receive 2-for-1 reduced cost access to the Boston Harbor Islands National and State Park.





# INVESTING IN YOUR PARKS

As the nonprofit partner of Boston Harbor Islands National and State Park, Boston Harbor Now is both a philanthropic and administrative partner for many key operations including water transportation, food service, and group volunteering.

For the year ending March 31, 2019, Boston Harbor Now managed \$250,000 of National Park Service investments in capital repairs to docks and piers. Working with City of Boston Community Preservation Act funds and the Massachusetts Department of Conservation and Recreation (DCR), Boston Harbor Now acquired new shade structures for Spectacle Island to provide a healthier gathering space for youth visiting the park. Boston Harbor Now also partnered with the National Park Foundation and National Park Service to conduct safety repairs for the piling and float system at Little Brewster Island, home of Boston Light.







## VOLUNTEERING ON THE BOSTON HARBOR ISLANDS

Boston Harbor Now, the National Park Service, and the Department of Conservation and Recreation continued the annual Day of Service with Blue Cross Blue Shield in the Boston Harbor Islands National and State Park. Volunteers aided the annual Coastsweep initiative to collect and log trash and celebrated their accomplishments in keeping your park clean. Group volunteer opportunities are available at [bostonharbornow.org/volunteer](http://bostonharbornow.org/volunteer).

## PROTECTING AND PRESERVING HISTORY WITH NORTH BENNETT STREET SCHOOL

Fort Warren on Georges Island held prisoners in the Civil War and defended Boston Harbor against U-boats in World War II. It takes a lot to preserve a Civil War era fort for the public, and Boston Harbor Now and DCR partnered with the North Bennet Street School to build a much-needed maintenance facility. Led by the carpentry department, the construction of the new facility provided an intensive, hands-on educational experience for 50 students.



▲ “North Bennet Street School was glad to have the opportunity to partner with Boston Harbor Now and DCR to create an important amenity on the Boston Harbor Islands while providing our students with an unparalleled experience.”  
- Brian Vogt, Head of Carpentry Department



# FINANCIAL SUMMARY

Detailed financial information can be found  
at [bostonharbornow.org/financials](http://bostonharbornow.org/financials)  
EIN: 04-3268863

## SUPPORT AND REVENUE

	FY2018	FY2019
Contributions	2,224,341	1,040,022
Government grants and contracts	962,428	788,349
Special events, net	676,267	758,535
Donated goods and services	42,579	247,270
Program service fees	149,083	165,867
Investment income	3,435	10,564
<b>Total Support and Revenue</b>	<b>4,058,133</b>	<b>3,010,607</b>

## EXPENSES

Program expenses	2,100,906	2,172,031
General and administrative	738,635	775,276
Fundraising	564,748	569,123
<b>Total Expenses</b>	<b>3,404,289</b>	<b>3,516,430</b>
Change in net assets from operations	653,844	-505,823
Net assets, beginning of year	1,834,173	2,488,017
Net assets, end of year	2,488,017	1,982,194

## ASSETS

Cash	780,266	1,257,653
Government grants and contracts receivable	684,150	186,090
Prepaid expenses	881,559	774,001
Government contracts receivable	25,727	12,599
Contributions receivable, net of current portion	585,000	-
Property and equipment, net	16,749	8,982
Intangible assets, net	14,222	72,355
<b>Total Assets</b>	<b>2,987,673</b>	<b>2,311,680</b>

## LIABILITIES

Accounts payable	330,079	72,052
Accrued expenses	168,415	257,434
Deferred revenue	1,162	-
<b>Total Liabilities</b>	<b>499,656</b>	<b>329,486</b>

## NET ASSETS

Unrestricted	459,386	548,692
Temporarily restricted	2,028,631	1,433,502
<b>Total Net Assets</b>	<b>2,488,017</b>	<b>1,982,194</b>
<b>Total Liabilities and Net Assets</b>	<b>2,987,673</b>	<b>2,311,680</b>



# SIGNATURE EVENTS



## ONBOARD AWARDS

The annual Onboard Awards recognize extraordinary contributions to public access and climate resilience on Boston Harbor. Our 2017 Awardees were Clippership Wharf, a Lendlease property, and Atlantic Wharf of Boston Properties. Our 2018 Awardees were The Fallon Company, TJ McCartney and the Painters and Allied Trades DC #35, and the Massachusetts Port Authority.

### 2017 HOST COMMITTEE

Co-Chair: Jamie Fay  
Co-Chair: Elizabeth Grob  
Sydney Asbury  
Maeve Bartlett  
Roger Berkowitz  
Barrett Cooke  
Ryan Cox  
Robert Culver  
Kevin Deabler  
Meaghan Hooper-Berdik  
Rebecca Lee  
Shelagh Mahoney  
Charles Norris  
Tom and Shelly O'Neill

### 2018 HOST COMMITTEE

Co-Chair: Nicholas Iselin  
Co-Chair: Meaghan Hooper-Berdik  
Maeve Bartlett  
Paul Bauer  
Jacob Citrin  
Brian Dacey  
Erin Evanoka  
James Folk  
Elizabeth Grob  
Dean Hara  
Doug McGarrah  
Charles Norris  
Shelly O'Neill  
Fred Peterson  
Jeff Porter  
Tom Steeves  
Yanni Tsipis

## SPECTACLE ON SPECTACLE

Spectacle on Spectacle is the annual kickoff to summer which raises critical funds to support the work of Boston Harbor Now. Each year, sponsors look forward to attending and hosting clients or special guests at this one-of-a-kind event on Spectacle Island.

### 2017 HOST COMMITTEE

Co-Chair: Jeff Porter  
Co-Chair: Shelly O'Neill  
Peggy Briggs  
Bill and Barbara Burgess  
Barbara Capuano  
Carol Churchill  
Tammy Casserly  
Brian Dacey  
Francesca Federico  
Phil Garrett  
Bob Golledge  
Elizabeth Grob  
John Hamel  
Meaghan Hooper-Berdik  
Nicholas Iselin  
Ann Klee  
Barbara Lynch  
Martha Ann Mazzone  
Doug McGarrah  
Tom McShane  
Liz Morningstar  
Alison Nolan

Tom O'Brien  
Martin O'Neill  
Dorrie Pizzella  
Alden Raine  
Bud and Margaret Ris  
Sarah Finnie Robinson  
and Jack Robinson  
Raj Sharma  
Cathy Stone  
Yanni Tsipis  
Richard Walker  
C.A. Webb  
William Weld  
Marcelle Willock

### 2018 HOST COMMITTEE

Honorary Co-Chair: Sen. Edward Markey  
Co-Chair: Paige Scott Reed  
Co-Chair: Martha Ann Mazzone  
Co-Chair: Barbara Lynch  
Gov. Michael and Kitty Dukakis  
Greg Erman  
Bob Golledge  
Elizabeth Grob  
John Hamel  
Meaghan Hooper-Berdik  
Amos and Barbara Hostetter  
Alison Nolan  
Martin and Shelly O'Neill  
Jeff Porter  
Alden Raine  
Raj Sharma  
Yanni Tsipis  
Richard Walker  
William Weld  
Marcelle Willock



# YOUR GENEROUS SUPPORT

Thank you to our donors. Your generous support between April 2017 and March 2019 is central to our ability to connect Boston residents and visitors to our waterfront, harbor, and islands.

## DONORS \$25,000 AND ABOVE

Barr Foundation  
 Blue Cross Blue Shield of Massachusetts\*  
 The Boston Foundation  
 Boston Harbor Cruises\*  
 Boston Water and Sewer Commission\*  
 Cabot Corporation Foundation, Inc.  
 Cabot Family Charitable Trust  
 City of Boston  
 Conti Foundation

Corcoran Jennison Companies  
 Eastern Salt Company, Inc.\*  
 Exelon Generation\*  
 Highland Street Foundation  
 Amos and Barbara Hostetter\*  
 Jamestown, L.P.  
 Lendlease  
 The Lynch Foundation  
 Ann Macomber\*  
 George Macomber Family Charitable Gift Fund\*  
 Grace Macomber Bird and Jerry Bird\*  
 Massachusetts Convention Center Authority

Massachusetts Department of Environmental Protection  
 Massachusetts Environmental Trust  
 Massachusetts Port Authority\*  
 Massachusetts Water Resources Authority  
 Mintz  
 MP Boston  
 National Park Foundation  
 Venkat and Pratima Srinivasan\*  
 James M. and Cathleen D. Stone Foundation\*  
 Yawkey Foundation

Boston Line and Service Co., Inc.  
 Boston Marine Society  
 Boston Marriott Long Wharf Hotel  
 Boston Properties  
 Boston Sail Loft  
 Boston Sand & Gravel Company  
 The Boston Shipping Association  
 Boston University  
 Boston Waterboat Marina  
 Boston Yacht Haven Inn & Marina  
 Bowditch & Dewey  
 William and Sarah Boynton  
 BR+A Consulting Engineers  
 Brian S. Hickey Associates Inc.  
 Rosalind Gorin and Matthew Budd



## DONORS \$1,000 - \$24,999

Anonymous (1)  
 484 Phi Alpha Foundation  
 A Better City  
 A. A. Will Corporation  
 Katherine F. Abbott  
 Mary and James Adelstein  
 Adler Pollock & Sheehan  
 AECOM  
 American Plumbing & Heating Corp.  
 Anderson & Kreiger, LLP  
 Arbella Insurance Group Charitable Foundation  
 Architectural Team, Inc.  
 Sydney Asbury  
 Dorrie Pizzella and Charlie Baker  
 The Barking Crab  
 Bay State Cruise Company  
 Beal Family Foundation  
 Meaghan Hooper-Berdik and Chris Berdik  
 Berkshire Bank  
 Anne Bailey Berman and Roger Berman  
 Bryce and Kathi Blair  
 Blue Hills Bank  
 BlueWave Solar  
 Bosport Docking, LLC  
 Boston Boat Basin, LLC  
 Boston BoatWorks, LLC  
 Boston Cultural Council  
 Boston Freight Terminals  
 Boston Global Investors  
 Boston Harbor Hotel  
 Boston Harbor Pilots Association  
 Boston Harbor Shipyard and Marina  
 Boston Harbor Striper Shootout

Bill and Barbara Burgess  
 Rick and Nonnie Burnes  
 Marianne Connolly and Andrew Calamare  
 Cambridge Innovation Center  
 Campion and Company  
 Cape Air  
 The Honorable Michael Capuano and Barbara Capuano  
 John Casella  
 Casella Waste Systems  
 Cashman Dredging and Marine Contracting  
 CBRE/New England  
 CBT Architects  
 Century Bank  
 Channel Fish Co., Inc.  
 Stephen Chapman  
 Shu Ngon Chau and Eva Mok Chau  
 Childs Engineering Corporation  
 Chiofaro Company  
 Citizens Bank  
 City Point Capital  
 CL Properties  
 David Clayman  
 Clean Harbors Environmental Services  
 Cloudcall  
 The Coleman Foundation  
 The Collaborative Companies  
 Commodore Builders  
 Terry Conroy, Jr.  
 Conroy Development  
 Matt Conti  
 Yvon and Raymond Cormier  
 Cranshaw Construction  
 Cresa Boston  
 Cresset Management LLC  
 The Cronin Group LLC

## FOUNDERS CIRCLE

Founders Circle members are the lifeblood of Boston Harbor Now, providing significant unrestricted funding of \$25,000 and above each year. Founders Circle members receive personalized updates from the President & CEO, recognition in the annual report, and exclusive opportunities to engage with Boston Harbor Now at programs and events throughout the year.

*Founders Circle members are indicated above with \**



Crosspoint Associates, Inc  
 CV Properties, LLC  
 Brian and Beth Dacey  
 John and Marie Dacey  
 Dana-Farber Cancer Institute  
 Mary E. Darmstaetter  
 Peter Davidoff  
 The Davis Companies  
 Deborah Pratt Dawson  
 Bob F. Daylor and Sue Daylor  
 Philip Y. DeNormandie  
 Denterlein  
 Dewey Square Group  
 Jack DiRico  
 Drew Company  
 Governor Michael Dukakis and Kitty  
 Dukakis  
 Eastern Bank Charitable Foundation  
 Elkus Manfredi Architects  
 Enbridge  
 Encore Boston Harbor  
 Paul English  
 Entertainment Cruises  
 The Episode Foundation  
 Epsilon Associates  
 Equity Office Properties  
 Eversource  
 Fallon Company  
 Fan Pier  
 Faneuil Hall Marketplace  
 Jamie and Maureen Fay  
 Francesca Federico  
 Grace and Edward Fey  
 Fidelity Investments  
 The Flatley Company  
 Foley Hoag LLP  
 Fort Point Associates, Inc.  
 Fulton Properties  
 G & C Concrete Construction  
 Gables Residential  
 GE Foundation  
 GEI Consultants  
 Keith and Debbie Gelb  
 General Electric  
 Gensler  
 Gilbane Building Company  
 Michael Glasfeld  
 Golledge Strategies & Solutions LLC  
 Gordon Rees Scully Mansukhani, LLP  
 Goulston & Storrs PC  
 Government Insight Group  
 Great-West Life & Annuity Insurance  
 Company  
 Green Ribbon Commission  
 Julia Guilfoyle  
 GZA GeoEnvironmental, Inc.  
 Haley & Aldrich, Inc.  
 Halvorson Design Partnership, Inc.  
 John and Dina Hamel  
 Handel Architects, LLP  
 Dean Hara  
 Harbor Towers Condominiums  
 Harborside Inn  
 Joanne Hayes-Rines  
 Donna and Charles Hazard

Heitzso  
 John W. Henry Family Foundation  
 Howard Stein Hudson  
 Hyatt Regency Boston Harbor  
 HYM Investment Group  
 InterContinental Boston  
 Intercontinental Real Estate  
 Corporation  
 International Union of Painters and  
 Allied Trades District Council #35  
 Janitronics Building Services  
 JN Phillips Auto Glass  
 John A. Penney Co., Inc.  
 John Hancock Investments  
 John Snow, Inc.  
 Edward C. Johnson III and Elizabeth B.  
 Johnson  
 Elizabeth L. Johnson  
 Brent P. Johnstone  
 Yanni Tsipis and Kristin Kara  
 Karas & Karas Glass Company, Inc.  
 Kearney, Donovan & McGee  
 Tom Kershaw  
 Tom Powers and Patricia King  
 Marc W. Knowlton and Tara Knowlton  
 Peggy Koenig  
 Kohn Pedersen Fox Associates  
 Mark and Ernesta Krackiewicz  
 Edward Ladd  
 Chuck and Ann Lagasse  
 Barbara Landau  
 Carmela Laurella  
 Barbara Lee  
 Rebecca Lee  
 Lee Kennedy Co Inc.  
 Legal Sea Foods  
 Mary Kay Leonard  
 Lovett-Woodsum Foundation  
 Ann Klee and John Macleod  
 Manganaro Northeast  
 Marc and Anne Margulies  
 Massachusetts Bay Lines  
 MassDevelopment  
 Martha Ann Mazzone  
 Judge David Mazzone Fund  
 McCall & Almy, Inc.  
 Merrill Lynch  
 James and Patricia Messenger  
 Midaxo, Inc.  
 ML Strategies  
 Moffatt and Nichol  
 Morgan Stanley Private Wealth  
 Management  
 Liz and Tim Morningstar  
 National Environmental Education  
 Foundation  
 National Grid  
 Nauset Strategies  
 Navy Yard Hospitality Group  
 New England Aquarium  
 Newmark Knight Frank  
 Nitsch Engineering, Inc.  
 Greg Erman and Deborah Norkin  
 Nutter, McClennen & Fish, LLP  
 Anne O'Neil

Martin and Carol O'Neill  
 O'Neill and Associates  
 P&G  
 Painters/Glass Employers Association  
 of New England LMP  
 Alan Palevsky  
 Jane and A. Neil Pappalardo  
 Pegasystems  
 Pelli Clarke Pelli Architects  
 Pembroke Real Estate

REI  
 Related Beal  
 Reynders, McVeigh Capital  
 Management, LLC  
 Elaine M. Richardson  
 Bud and Margaret Ris  
 David Roberts  
 Sarah Finnie Robinson and Jackson  
 Robinson  
 David and Susan Rockefeller



## BOSTON LIGHT SOCIETY

Boston Light Society members are a distinguished group of supporters who receive special opportunities and benefits designed to deepen their relationship with the work of Boston Harbor Now and help lead our organization into the future. Created on the 300th birthday of the nation's oldest lighthouse, Boston Light Society members are the backbone of Boston Harbor Now. You can join today with a gift of \$1,000 or more or a monthly gift of \$84 or more.

Robert Fogel and Larry Petrovich  
 Pierce Atwood LLP  
 Plymouth Rock Foundation  
 Jeffrey R. Porter  
 Porter Novelli  
 Pyramid Hotel Group  
 RAGE Frameworks  
 Alden Raine  
 Rasky Partners  
 Joel and Rachel Reck  
 Redgate  
 Paige Scott Reed and Chris Reed  
 ReEnergy Recycling Operations  
 Regatta Management Solutions

RODE Architects  
 Roseland Residential Trust  
 Rubin and Rudman LLP  
 Salem Five Bank  
 Sasaki Associates  
 The Schwartz Charitable Foundation  
 Cameron Scott  
 Jay Cashman and Christy Scott  
 Cashman  
 Raj and Nalini Sharma  
 Chi and Susan Shuyi Shue  
 Skanska  
 David and Lisa Solomon  
 The Solomon Foundation



J. Craig and Gretchen Speck  
Stantec  
State Street  
Pam and Ray Stenson  
James M. and Cathleen D. Stone  
Stoss Landscape Urbanism  
Laurie S. Swett  
Synergy Investments  
Tai Tung Pharmacy  
Tavistock Restaurant Upscale Group  
Holdings, LLC  
TG Gallagher  
Tishman Speyer Properties  
Tito's Handmade Vodka  
Trinity Financial  
Thomas Trogele  
Turner Construction Company  
Twelve Points Wealth Management  
United Way of Massachusetts Bay and  
Merrimack Valley  
Utile Architecture & Planning  
Verizon Foundation  
Vertex Pharmaceuticals  
VHB  
Richard C. Walker, III and Betty  
Walker  
E. Catlin Donnelly and G. Hampton  
Watkins  
Lowell and Helga Watkins  
C.A. Webb  
Lee Webster  
Governor William Weld  
Susan Whitehead  
Alice Willard Dorr Foundation  
Dr. Marcelle Willock  
Edward Wilson  
Leverett and Marian Wing  
Enid L. Beal and Alan Wolfe  
WS Development  
WSP

#### **DONORS \$250-\$999**

Anonymous (1)  
Dan Crane and Deborah Allard  
Allied Universal  
AR Products  
Kate Armstrong  
Arrowstreet Inc.  
ARUP  
Associated Grant Makers  
Atlantic Coast Seafood, Inc.  
James Steiner and Audrey Augun  
Bank of America Foundation  
Anne Barrett  
Michael and Meaghan Barry  
Jane Bernstein  
Peggy Briggs  
Michael and Saran Broderick  
Lewis and Rinda Burleigh  
Katie and Paul Buttenwieser  
Kate Thompson and Dan Calano  
Casner & Edwards, LLP  
CDM Smith  
Carol Churchill

Rachel Clafin  
Meg Colclough  
Conservation Law Foundation  
Buzz Constable  
Tammy Casserly  
Copley Wolff Design Group, Inc.  
Crosby Schlessinger Smalridge  
Cue Ball Capital  
Michael Dalton  
Peggy and Dick Danziger  
Gary Davis  
Peggy Davis  
Mark Dawson  
Meera Deean  
Dimeo Construction Company  
Stephen Doody  
Doug McGarrah and Elizabeth Dowd  
Michael Dreese  
United Way of Massachusetts Bay and  
Albert Everts  
Feldman Land Surveyors  
The Fish Family Foundation  
Walter and Patricia Flaherty  
Stefanie Fulton  
Priscilla Geigis and Kurt Gaertner  
Feng Ge Huiming Guo  
Erin Gibbons  
Robert and Susan Glovsky  
John M. Gross  
Robert and Michele Hanss  
Harpoon Brewery  
John and Kathleen Healey  
Brian Hickey  
Hingham Land Conservation Trust  
Jack Hobbs  
Charles Holley  
Keith Hartt and Ann Houston Wiedie  
Pamela and John Humphrey  
The Juice Box  
James Karadimos  
Kenney Development Company, Inc.  
Kleinfelder  
Susan Knack-Brown  
John and Wendy Larivee  
Fred A. Laskey  
Susanne Lavoie  
Anne Leiby  
Lynch, DeSimone, & Nysten, LLP  
Mahmood Malihi  
Bill and Kathy Masterson  
Christine McVay  
Louis Milinazzo  
Sally Murphy  
Jack Murray  
Charlayne Murrell-Smith  
Normandeau Associates  
Charles and Diane Norris  
Norris & Norris Associates  
Shelly and Tom O'Neill  
Pat and Jim Poitras  
Robert Gordon and Traci Portnoff  
Prince Lobel Tye LLP  
Quarry Capital Management LLC  
William and Katherine Reardon  
Louise C. Riemer  
Patricia Rocha

Michael Creasey and Joan Ross  
Cheri Ruane  
Diane Rubin  
Kippy Rudy  
Sean Sanger  
Tedd and Ella Saunders  
Savills Studley  
Carole Schlessinger  
John Schmid  
Lois Siegelman  
Brian Payea and Tom Skinner  
Solomon McCown & Co.  
Joe and Joyce Spaulding  
Wesley and Patricia Stimpson  
Strategy Group  
Ben and Kate Taylor  
Robin Lepore and Andy Thomas  
Catherine Tran  
The Trustees  
Renata von Tscharnar  
Tufts University  
Rebecca Ullman  
The University of Massachusetts  
Boston  
Friedrich Von Gottberg  
Dave and Lynn Waller  
Susan and Robert Walsh  
Wharf District Council, Inc.  
Lisa and Mark Wieland  
Jodi Wolin  
World Ocean School  
Julie Wormser  
Claudia Yokooji  
Robert Zaret  
Zeckhauser Family Foundation

#### **DONORS UP TO \$250**

Jayne Abbott  
Marc and Liz Albert  
Dave Alexander  
Kathryn Alexander  
Nancy Alusow  
Julia Ambridge  
Frederick Ames  
Marge and Bob Anderson  
Kitty and Rodney Armstrong  
Connie Askin  
Jared Auerbach  
William Bade  
Dr. Gary Balady and Rosemary Balady  
Carol Ball  
Fredrik Barash  
Elizabeth Barnes  
Phil Griffiths and Alicia Barton  
Dawn Spano and Richard Bates  
Ivan Bath  
Julie Battisti  
Katherine Bausemer  
Eleanor Beaton  
Matthew Beaton  
Wayne E. Beitler  
Amanda Harless and Gabriel Belosevic  
Stephen and Deborah Berk  
Steven Bernstein

Peter Black  
Austin Blackmon  
Eliza Blanchard  
Karen Blandino  
Geri Blitzman  
Faye Boardman  
Sarah Boardman  
Bryce Bodenair  
Thomas Brazier  
Christine Breen  
Holly Brink  
Jack Garvey and Dr. Trevor Brothers  
Alice Brown  
Eric Brown  
Justin Brown  
Maggi Brown  
Erik Bullen  
Daniel Sieger and Lucy Bullock-Sieger  
Jean Hines Burke and Richard Burke  
Curt Burmeister  
Holly and Tim Burns  
Renee Bushey  
Samantha Butwill  
Laurie Cadigan  
Kathia Capellupo  
Ann Capoccia  
Sandra Cardillo  
Michael Carragher  
Maureen Carter  
Colleen and Kevin Caruso  
Gary and Heather Caruso  
Karen Reece and Michael Carvalho  
Delvyn Case  
David W. Cash, Ph.D.  
Colleen Cavanaugh  
Maureen Cavanaugh  
Lynne Champion  
Carole Charnow  
Chestnuts of Beacon Hill  
Helen Chin Schlichte  
Jill Christians  
Jack Clark  
John and Michelle Cleveland  
William and Stephanie Clohesy  
Russell A. Cohen  
Mary Cole  
David Collins  
Kevin Connors  
Cynthia and Ernest Cook  
Liz Cook  
Mary and Dennis Corcoran  
Paula V. Cortés  
Anthony Cortese  
Lee Costello  
Patricia Coy  
David Crossman  
Harold S. Crowley, Jr.  
Terry Cryan  
Ann Cullerton  
Alice Cura  
Valjeanne Currie  
Deborah Cushman  
Hollywood Davis  
Jordan Deasy  
Stephen DeDonato



Janet Deegan  
 The Honorable Robert DeLeo  
 Ann DeLuca  
 Meghan Denenberg  
 Giana DePasquale  
 Sally and John Dias  
 Carl Dierker  
 Mary L. Dill  
 Richard Dimino  
 James Hoyte and Norma Dinnall  
 Kaushik Dixit  
 Stephen Dodge  
 Paul and Gail Doherty  
 Mike Domenica  
 Mark Donahue  
 Harry Dondero  
 Sherrie Cutler and Bob Donohue  
 Robert Doucette  
 Lorraine Downey  
 Janice Doyle  
 Jennifer Ducey  
 Angelyn Duffy  
 Danielle Duplin  
 Judith and Marc Ehrlich  
 Adam Eisenberg  
 Robin Elkins  
 Michael and Julie Ellenbogen  
 Kathleen Elliott  
 Sandra Eltringham  
 Annette Emerson  
 Energy Systems Group, LLC  
 Janet Engelman  
 Elisabeth Evans  
 Myriel C. Eykamp and William Eykamp  
 Mary and James Fernandes  
 Christopher Fincham  
 Glenda and Robert Fishman  
 Phyllis Ann Fitzpatrick  
 Deborah Fogarty  
 Joseph Foley  
 Robert Foley  
 William Rockford and Janice Forgays  
 Paul Forman  
 Leslie Friedman  
 Michael and Linda Frieze  
 Alison Gaiko  
 Marilyn Newman and William Ganong  
 Lynn Garcia  
 Phil and Emily Garrett  
 Annette Garvey and Jack Garvey, Sr.  
 Eileen Gavin  
 Doug Gensler  
 Dan Gerber  
 Virginia Ghiringhelli  
 Janice Glynn  
 Mark Goldberg  
 Stephanie Goldberg  
 Vishwanathan Raja Gopalan  
 Jennifer Brown and Susan Goranson  
 Claire Goulthorpe  
 Patricia Gowdy  
 Margaret and Kerry Grealish  
 Kyle Greaves  
 The Green Engineer  
 Peter and Liz Greene

Kristen Greim  
 Aharon Grossman  
 Brian Haak  
 Ronald Haberkorn  
 Casey Hagerty  
 Cindy and Jusdon Hale  
 Peter Hamill  
 Suzanne and Easley Hamner  
 Burt Hansen  
 Mary Harmer  
 Donald and Virginia Harrington  
 Peter and Elizabeth Hay  
 Laura Hayes-Heuer  
 Jason Hellendrung  
 H. David Hennessey  
 Sean Hennessey  
 Jennifer Herrera  
 Carol B. Hillman  
 M. Blossom Hoag  
 Susan Holaday  
 Mary Holland  
 Stephen D. Hooper  
 Jill Valdes Horwood and Chris Horwood  
 Cecile Howard  
 Grace Howard  
 Lindsey Howard  
 Richard and Judy Howe  
 Jessica Hughes  
 John Hynes III  
 Gene Irvine  
 Nicholas Iselin  
 Bruce Jacobson  
 Laura Jasinski  
 Deborah and Andrew Johnson  
 Keith Johnson  
 JP Morgan Chase Foundation  
 Faith Justice  
 Srinivasan Kalivelusamy  
 Linda Karaberis  
 Dennis Kavanagh  
 Douglas Kelleher  
 Sarah Peskin and William Kelley  
 Shelley Metzenbaum and Prof. Steven Kelman  
 Dan and Annabelle Keohane  
 Ladan Khamsi  
 Jim Kilmurray  
 Hillary King  
 Jane Kinsel  
 Paul Kirshen  
 Christopher Klein  
 Carren Knehr  
 Beverly Knight  
 Charlotte Knox  
 Paul Krauss  
 Nancy Krepelka  
 Benktesh Kumar  
 Napus Kunathai  
 Laura Kurzrok  
 Mary Kuttner  
 Peter and Elaine Kuttner  
 Julian Lachendro  
 Caroline Lamb  
 Felicia Lambeth

Alex Lanstein  
 Susan Larracey  
 Trevor Laubenstein  
 Eleanor Laukaitis  
 Anne Lauriat  
 Kent and Erna Lawrence  
 Daniel Lebiedz  
 Daniel and Gail Leclerc  
 Sheila Lemke  
 Jane Leonard  
 Gina Zizza and Mark Levitan  
 Betsy Lewenberg  
 Chaurice Lewis  
 Sonja Plesset and Kau Liem  
 Susan Lindmark  
 Carl Long  
 Amy Longworth  
 Anne Lougee  
 Jo-Ann and Montgomery Lovejoy  
 Erik Lund  
 Howard Lurie  
 John and Maria Lyons  
 David and Daria Lyons O'Connor  
 Phillip Macarthur

Elissa and Josh Marena  
 Cristin Martineau  
 Justin Masterman  
 Mark Mayall  
 Steven and Susan Maze Rothstein  
 Michael McAteer  
 Sara and Charlie McCabe  
 Betsy McCombs  
 Ross and Susan McConnell  
 Jane and Dennis McCroly  
 John McDonnell  
 Henley McDonough  
 James and Katherine McGaugh  
 Donna McGeggen  
 Kelley McGill  
 Margaret McGinnis  
 Jennifer McGivern and Arthur R. McGivern  
 Brian and Cindy McGreevy  
 Richard McGuinness  
 Carrie McGuire  
 Robin Pfetsch and Brian McKeller  
 Jennifer and Robert McMahan  
 Janice and Brian McPhillips



## DONOR ADVISED FUNDS

Please talk to your advisor and make a contribution to Boston Harbor Now today. For more information, contact Jodi Wolin, Vice President for Institutional Advancement at [jwolin@bostonharbornow.org](mailto:jwolin@bostonharbornow.org) or 617-223-8686.

Colleen MacDonald  
 Eleanor and Richard Maciolek  
 Barbara Mackey  
 William and Joanne MacNevin  
 Sharon and R. Bradford Malt  
 Joanne Manning  
 Thomas Manson  
 Keith and Virginia Marcotte

Sheila M. Mello  
 Alexander Abbott and Jennifer Melville  
 Christian and Mike Merfeld  
 Christopher and Catherine Milton  
 Teresa A. Mirabito  
 Penny Mitchell  
 Rob Moir  
 Vivian Montuori



Barbara Moran  
Richard Morningstar  
Robert Morris  
Michael Healy and Susan Morrison  
Elaine Morse  
Peter Morse  
Sherman Morss  
Hilary Mulligan  
Alankrita Narang  
Cathy Neal  
Beatrice and Peter Nessen  
Paul Neumann  
Michael Nichols

Joseph Perkell  
Marna Peters  
Dr. Beverly and Dr. James Philip  
Ervin and Elizabeth Philipps  
Diana Pisciotta  
Meredith Piscitelli  
Heather Poco  
Antonia Pollak  
John Pomer  
Christopher Porter  
Larry and Valerie Post  
Norbert P. Psuty and Sylvia H. Psuty  
Coco Qin

Anita Rossi  
Ruth Rothstein  
RoundUp App  
Sue and Terrence Rushfirth  
Howard Russell  
Marian Ryan  
Mary Sanderson  
Lindsey and Abe Sands  
Meghan Sant'Anna  
Lidia Vitiello and Steven Santoro  
Todd Saunders  
Patricia Schiavoni  
Ruth Scully Hall  
Dana Seero

Pace Willisson  
Serita Winthrop  
Worcester Garden Club  
Bebe Wunderlich  
Barbara Yanke  
Luyao Zhang  
Chan Zhou  
Matthew Zieper  
David Zipkin  
Morton and Myra Zisk  
Martin Zogran



## A LASTING LEGACY

A gift in your will or estate plan protects Boston Harbor for future generations. For more information, contact Jodi Wolin, Vice President for Institutional Advancement at [jwolin@bostonharbornow.org](mailto:jwolin@bostonharbornow.org) or 617-223-8686.

Carolyn Noble  
Robert and Marina Noreck  
Jennifer Norwood  
Tara Nye  
Law Office of Richard A. Nysten, Jr.  
Terese and Pat O'Connell  
Ellen O'Flaherty  
Sarah O'Shaughnessy  
Steven Olanoff  
Ruth Orenstein  
Marvin Ostreicher  
Daniel Owoyemi  
Joseph Paciorek  
Rita Pagliuca  
Han Park  
Giles and Michelle Parker  
Michael Patterson  
Judith and Thoru Pederson  
Anthony and Kitty Pell

Jonathan Ralton  
Anne Grimes Rand  
Raven, Inc.  
Kathleen Ray  
Edith Raymond  
James Re  
Chris and Kita Reece  
Adam Reeve  
Pauline Reeve  
Erin Reilly  
Timothy Grove and Ann Marie Reilly  
Grace Reinelt  
Erik Rexford  
Patricia E. Rice  
Seth Riseman  
Gary and Natalie Robinson  
Thomas and Maureen Roche  
Paul Romary  
James D. Rooney

Rachel Sensenig  
Sarah Sharpe  
Cmdr. Monica Shean-Craig  
Paul Shoemaker  
Mary Jean Shultz  
Lynn Shyevitch  
Martha Sibert  
Michael Silverman  
Helaine Simmonds  
Geoffrey Simons  
Jeannine and John Slauson  
Rebecca Smerling  
J. Christina Smith  
Jeffrey Smith  
Mark Smith  
Joanne Spitz  
Johanna Stamm  
Liza Stearns  
Caralyn Stern  
Cynthia Stewart  
Bill Horne and Sandra Stewart Horne  
Bradford Stokes  
Diane and Bradford Straus  
Gary Sullivan  
Anne Swain  
Natalie Swanstrom  
Manyee Tang  
Patricia and Armand Thiboutot  
Keeper Sally Snowman and James Thomson  
Jean Thrall  
Richard Tobin  
Blair Toland  
Audrey Tortolani  
Kathan Tracy  
Megan Tupa  
Stephen Vail  
Emilie Valle  
Annick Van den Abbeele  
Jeannie Visnick  
Christine Walsh  
Stephanie and Jonathan Warburg  
Deborah Wathen Finn  
Ann P. Hochberg and Howard Weinstein  
Robby Wettach  
William Whelan  
Catherine White  
Christopher Wicken  
Dorothy and Richard Willey  
Christopher Williams

## IN KIND

Athleta  
B. Good  
Barbara Lynch Gruppo  
Boston Beer Company  
Boston Harbor Cruises  
Boston Harbor Distillery  
Boston Harbor Hotel  
Boston Harbor Pilots Association  
Cape Air  
City Winery  
Community Consulting Teams  
Robert Cordy  
Equinox  
Michele and Robert Hanss  
Harborside Inn  
Hunt's Photo and Video  
Jackrabbit Design  
Justin's  
Legal Sea Foods  
LL Bean  
Melanoma Foundation  
Nestle USA  
Ocean Prime  
Ocean Spray Cranberries, Inc.  
Odwalla  
Paleonola  
REI  
Stormalong Cider  
T.J. McCartney, Inc.  
Trillium Brewing  
Vinodivino  
Wagagama

## PLANNED GIVING

*We thank donors who have included Boston Harbor Now in their will or estate plan.*

Katherine F. Abbott  
Catherine and Bob Barner  
Dean Hara  
Joel and Rachel Reck

# OUR PUBLIC AGENCY PARTNERS

Our work is powered by partnership. Boston Harbor Now would not be able to carry out critical mission-driven work in our parks and public spaces without collaboration with a variety of state, municipal, and federal agencies, including those that make up the Boston Harbor Islands Partnership.



Boston Harbor Now is proud to serve as the official non-profit partner of Boston Harbor Islands National and State Park and the Boston Harborwalk.



## BOSTON HARBOR NOW

15 State Street  
Suite 1100  
Boston, MA 02109

Mailing address:  
PO Box 961712  
Boston, MA 02196

617-223-8667  
info@bostonharbornow.org

EIN: 04-3268863

- @bostonharbornow
- /bostonharbornow
- @bostonharbornow
- /company/bostonharbornow
- /bostonharbornow



This publication is printed on recycled paper by Jet Mail Services, Inc.





Join us at  
[bostonharbornow.org](https://bostonharbornow.org)

---

